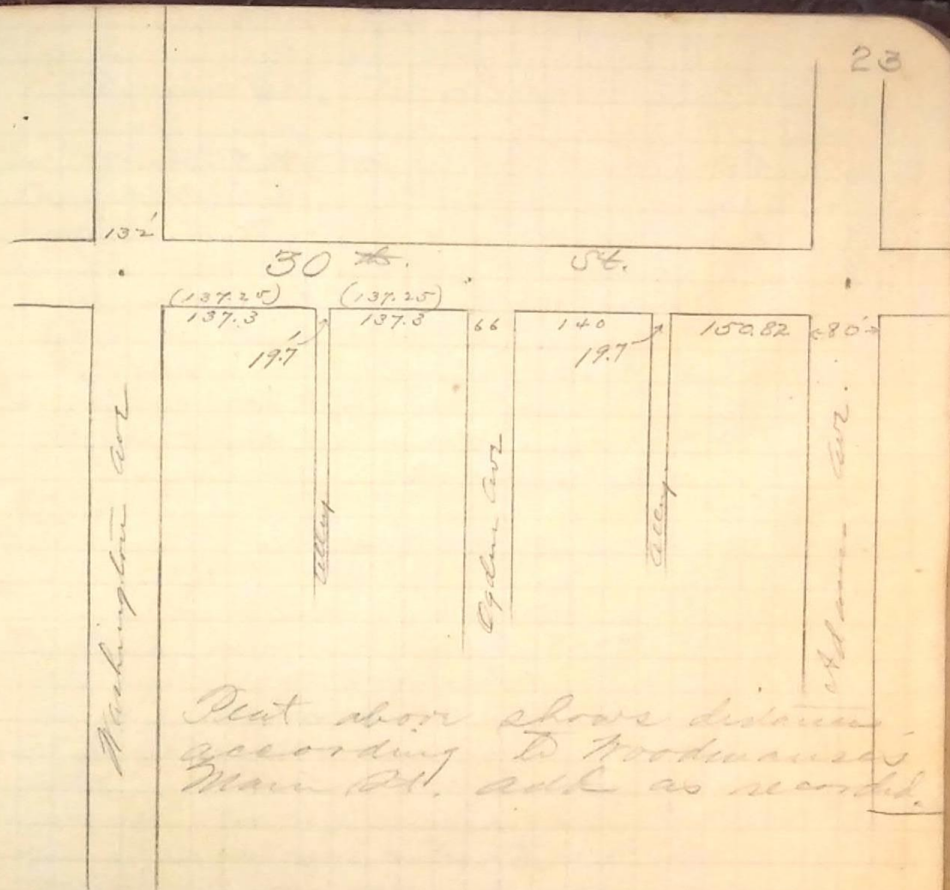


Location of Ogden Ave. Aug. 3, 1891
 Set B.O. at Adams + 25th St,
 Transit at Adams + 28th St,
 Double center + set plungo on either
 side of 30th St. + Adams for intersection.
 Then setting on Washington and
 30th St. with B.S. at 30th and
 Grant I double center and intersect
 all plungo at 30th and Adams.

Measure distance from Adams to
 center of Washington = 776.59 feet,
 check. 776.57
 mean point = 776.63

In locating Ogden Ave I make it
 conform to the location as given in
 Woodmansee's Main St. alk. I therefore
 measure east from the center of Wash
 Ave according to the plat opposite
 370.21 from ^{following for difference in measuring} N. 10' N. of center of Wash. &
 30th St. to the west boundary of Ogden
 Ave, and 66 feet farther to the east
 boundary of same.

Setting fire these points with B.S.
 at Grant + 30th I set plungo on
 both boundaries of Ogden Ave



Plat above shows distance
 according to Woodmansee's
 Main St. alk as recorded.

Note, The above figures in brackets are
 the actual distances as measured
 in locating Ogden Ave,